

- Excelon design allows in-line or modular installation
- Full flow gauge ports
- Balanced valve design for optimum pressure control
- Push to lock adjusting knob with tamper resistant accessory
- R72R reverse flow option
- Modular installations with Excelon 72, 73, and 74 series can be made to suit particular applications



Ordering Information. Models listed include unidirectional flow, PTF threads, knob adjustment, relieving diaphragm, 5 to 150 psig (0.3 to 10 bar) outlet pressure adjustment range* with gauge.

Port Size	Model	Flow [†] scfm (dm ³ /s)	Weight lb (kg)
1/4"	R72G-2AK-RMG	70 (33)	0.79 (0.36)
3/8"	R72G-3AK-RMG	70 (33)	0.79 (0.36)

[†] Typical flow with 150 psig (10 bar) inlet pressure, 90 psig (6.3 bar) set pressure and a 15 psig (1 bar) drop from set.

Alternative Models

R 7 2 ★ - ★ ★ ★ - ★ ★ ★

Flow Type	Substitute
Standard	G
Reverse flow	R

Port Size	Substitute
1/4"	2
3/8"	3

Threads	Substitute
PTF	A
ISO Rc taper	B
ISO G parallel	G

Gauge	Substitute
With	G
Without	N

Outlet Pressure Adjustment Range*	Substitute
5 to 30 psig (0.3 to 2 bar)	C
5 to 60 psig (0.3 to 4 bar)	F
5 to 150 psig (0.3 to 10 bar)	M
10 to 250 (0.6 to 17 bar)*	

Diaphragm	Substitute
Relieving	R
Non relieving	N

Adjustment	Substitute
Knob	K
T-bar	T

* Outlet pressure can be adjusted to pressures in excess of, and less than, those specified. Do not use these units to control pressures outside of the specified ranges.

* 250 psi model only available with T-handle.

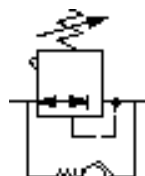
ISO Symbols



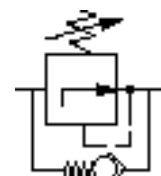
R72G Relieving



R72G Non Relieving



R72R Relieving



R72R Non Relieving

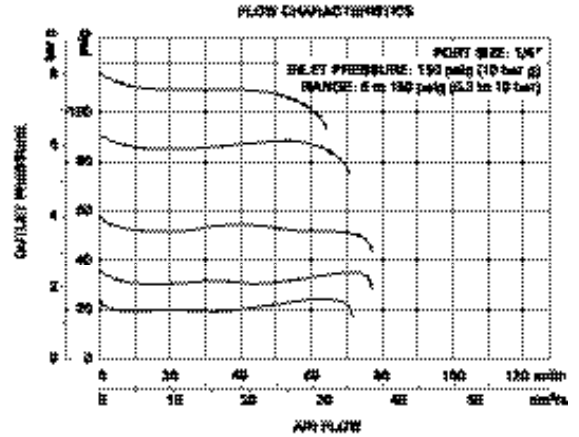
See Section ALE-24 for Accessories



Technical Data

Fluid: Compressed air
 Maximum pressure: 300 psig (20 bar)
 Operating temperature*: -30° to 150°F (-34° to 65°C)
 * Air supply must be dry enough to avoid ice formation at temperatures below 35°F (2°C).
 Approximate flow at 150 psig (10 bar) inlet pressure, 90 psig (6.3 bar) set pressure and a droop of 15 psig (1 bar) from set: 70 scfm (33 dm³/s)
 Gauge ports:
 1/8" PTF with PTF main ports
 1/8" ISO Rc with ISO Rc main ports
 1/8" ISO Rc with ISO G main ports
 Materials:
 Body: Zinc
 Bonnet: Acetal (Zinc on 250 psi model)
 Valve: Brass
 Elastomers: Nitrile
 Bottom plug: Acetal

Typical Performance Characteristics



Service Kits

Item	Type	Part Number
Service kit	Relieving	4381-500
	Non relieving	4381-501

Service kit includes diaphragm assembly, valve assembly, valve spring and o-rings.

All Dimensions in Inches (mm)

Panel mounting hole diameter: 1.57" (40 mm)

Maximum panel thickness: 0.16" (4 mm)

